



# MONTHLY MEMBERSHIP PROGRESS REPORT

District 323 G1

Results as of: 10/31/2015

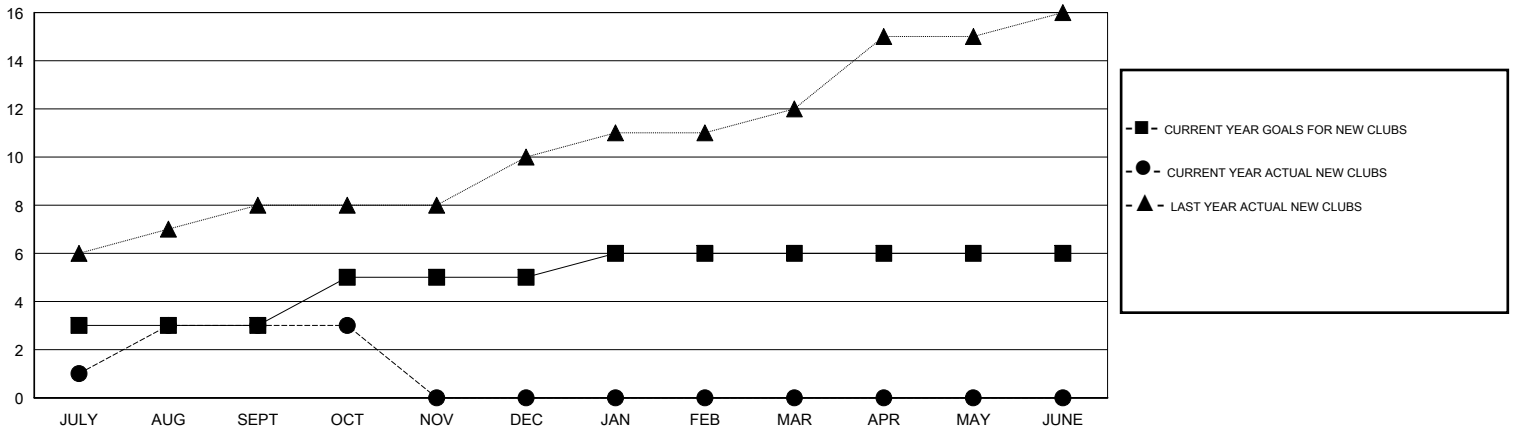
GMT: KAMLESH JAIN

LOCATION INDIA

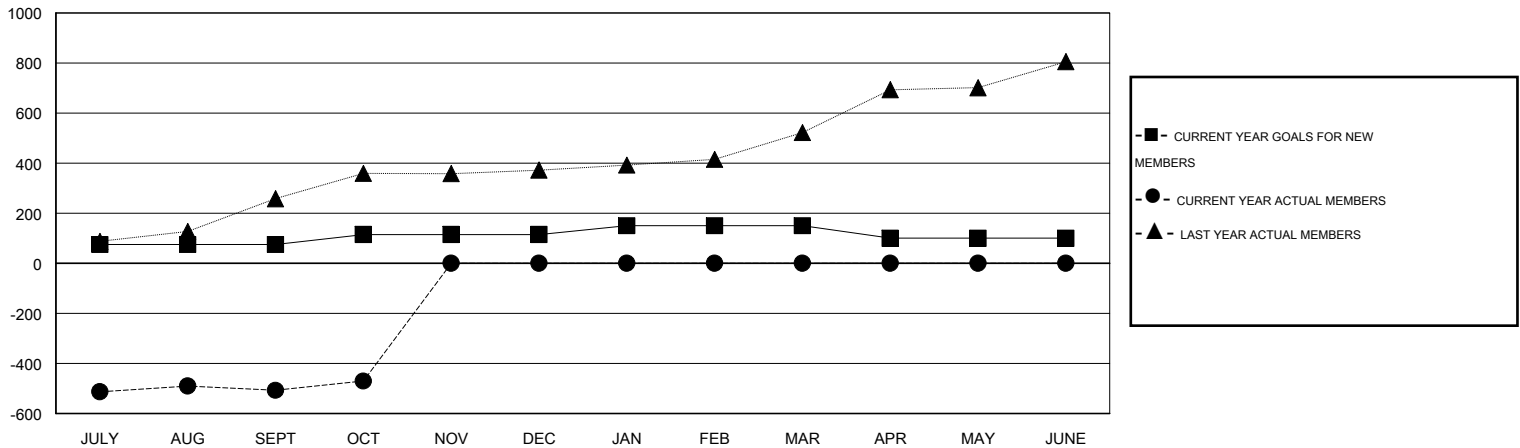
GMT CA 6

Clubs					Members				
RESULTS FOR 2015-2016					RESULTS FOR 2015-2016				
QUARTER	NEW CLUB GOAL	NEW CLUBS	DROPPED CLUBS	NET GAIN/LOSS	QUARTER	NEW MEMBER GOAL	CHARTER AND NEW MEMBERS ADDED	DROPPED MEMBERS	NET GAIN/LOSS
JULY/AUG/SEPT	3	3	0	3	JULY/AUG/SEPT	75	102	609	-507
OCT/NOV/DEC	2	0	1	-1	OCT/NOV/DEC	40	41	4	37
JAN/FEB/MAR	1	0	0	0	JAN/FEB/MAR	35	0	0	0
APR/MAY/JUNE	0	0	0	0	APR/MAY/JUNE	-50	0	0	0

GOALS AND ACTUAL NEW CLUBS CUMULATIVE



GOALS AND ACTUAL MEMBERS CUMULATIVE



DROPPED CLUBS: 1	31 CLUBS OF 129 ADDED 1 OR MORE NEW MEMBERS	<u>GENDER DISTRIBUTION</u>	
		MALE	2,887 (74.04%)
<u>DROPPED MEMBERS</u>		FEMALE	1,012 (25.96%)
DECEASED	1	<a href="#">CLICK HERE FOR HEALTH ASSESSMENT DATA</a>	
CLUB CANCELLED	0		
OTHER	612		
<b>TOTAL</b>	<b>613</b>	FAMILY UNIT MEMBERS	1,285
		HEAD OF HOUSEHOLD	565
		NON-HEAD OF HOUSEHOLD	720